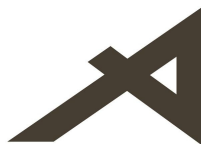




NU-WALL EXTRUDED ALUMINIUM CLADDING

Installation Specifications – Horizontal orientation (direct-fixed)

- 1. NW-H001; Starter strip & fixing detail**
- 2. NW-H002; Starter strip over timber floor**
- 3. NW-H003; Starter strip over waterproof deck**
- 4. NW-H004; Starter strip / external 90° corner isometric**
- 5. NW-H005; External 90° corner**
- 6. NW-H006; Internal 90° corner**
- 7. NW-H007; Vertical joint**
- 8. NW-H008; Window sill section**
- 9. NW-H009; Window jamb section**
- 10. NW-H010; Window head section (coinciding with full board)**
- 11. NW-H011; Window head section (notched board)**
- 12. NW-H012; Window head & sill soaker flashing detailing**
- 13. NW-H013; Window head flashing end detail (full board)**
- 14. NW-H014; Window head flashing end detail (notched board)**
- 15. NW-H015; Meter box sill section**
- 16. NW-H016; Meter box jamb section**
- 17. NW-H017; Meter box head section**
- 18. NW-H018; Soffit trim section**
- 19. NW-H019; Pipe penetration**
- 20. NW-H020; Roof / wall junction**
- 21. NW-H021; Parapet flashing**
- 22. NW-H022; Deck junction**
- 23. NW-H023; Gutter / wall junction**



BRANZ Appraised
Appraisal No.557 [2007]

Note

Standard fixing spec. for timber framing shown. Can vary depending upon substrate and wind load.

Building Wrap Compliant with E2/AS1 Table 23

NC204

8gx32 s/s csk screw

NC 203

Universal Fixing Bracket @ 600mm centres

2.5mm x 30mm Hot Dip Galv. Clout x 2 @ 600mm centres

NC101

Starter Strip

Bottom Plate

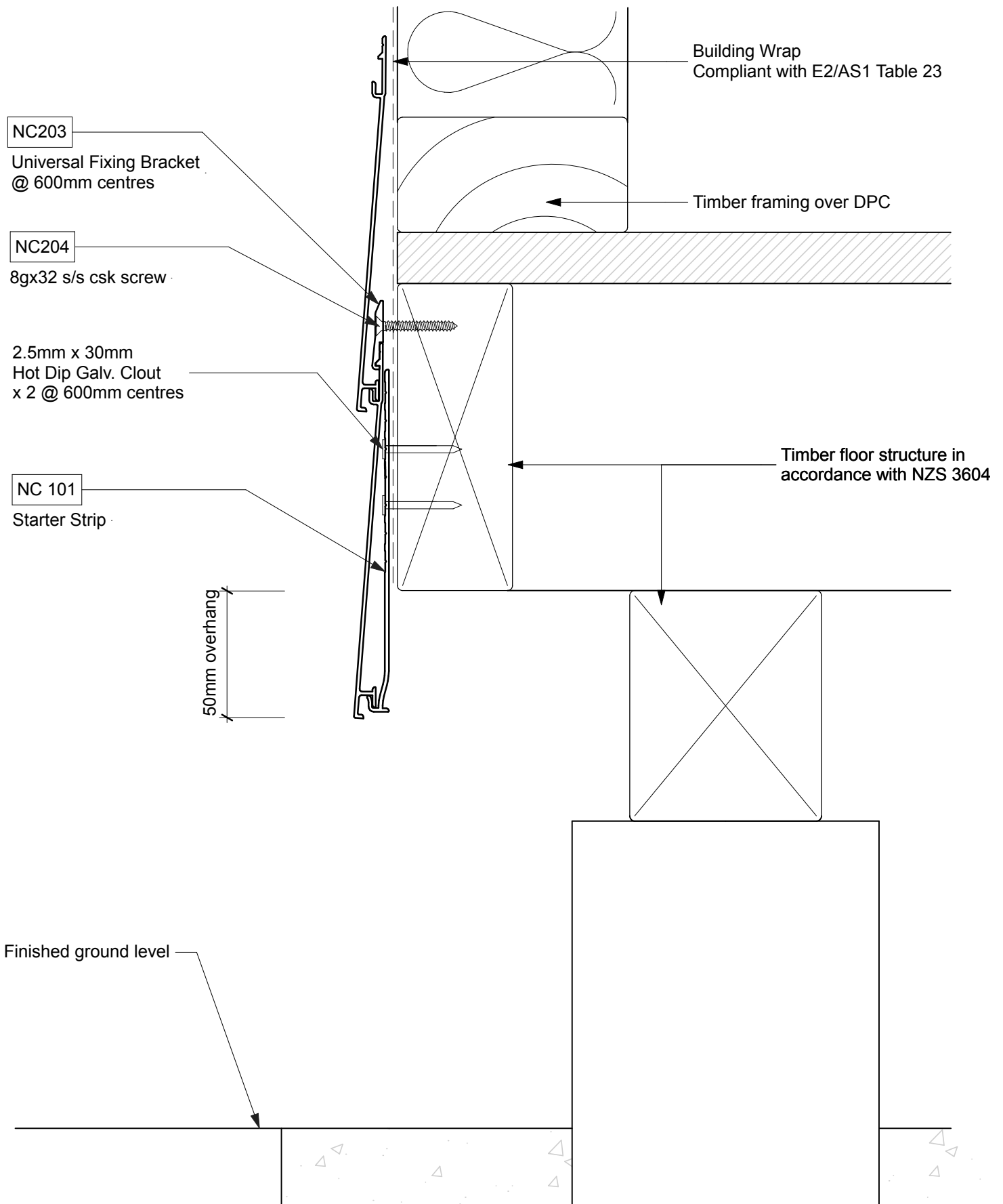
50mm Min. Variable up to 105mm to facilitate alignment with window sill/head

50

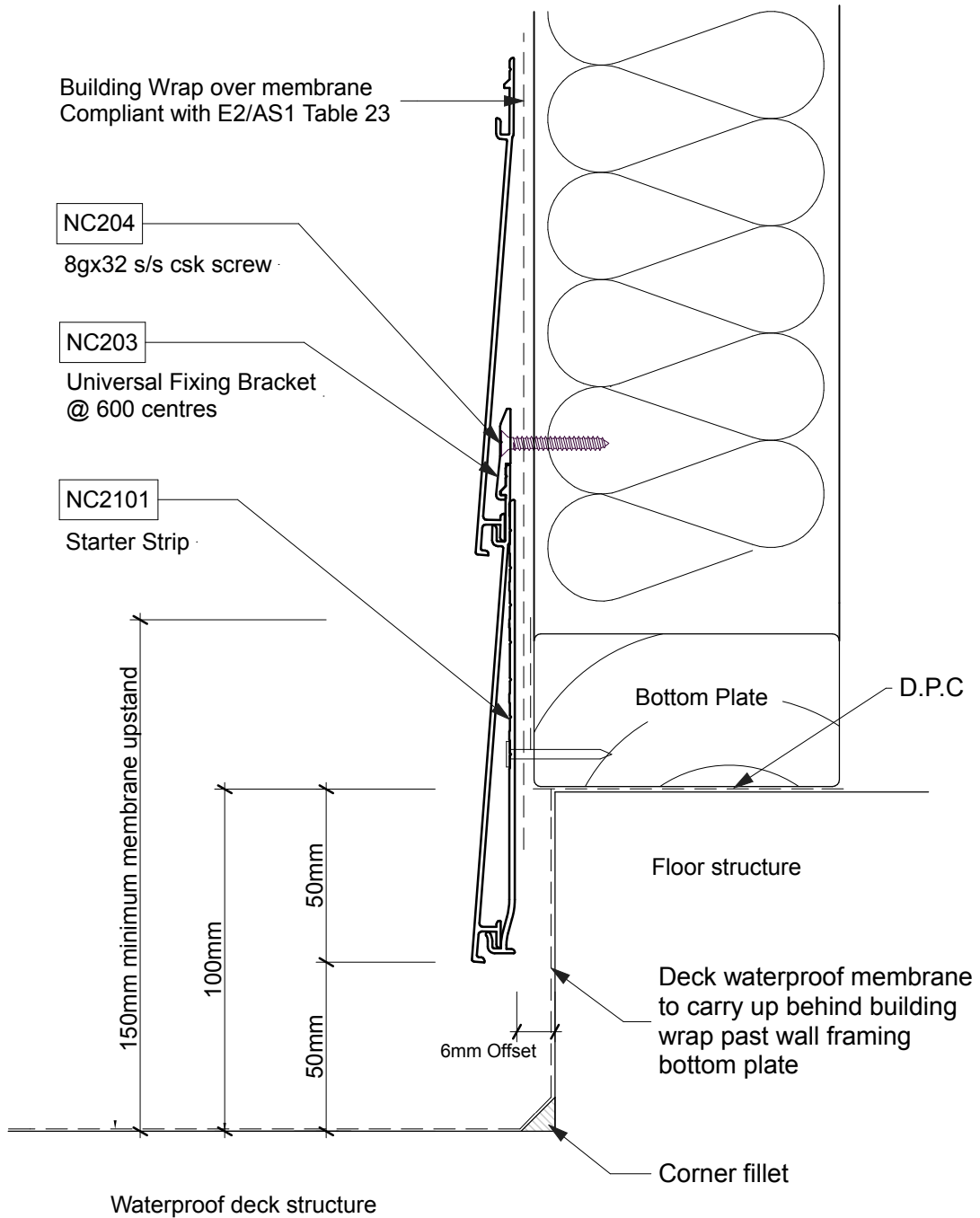
100mm to permanent paving or 175mm to unpaved ground

6mm Offset

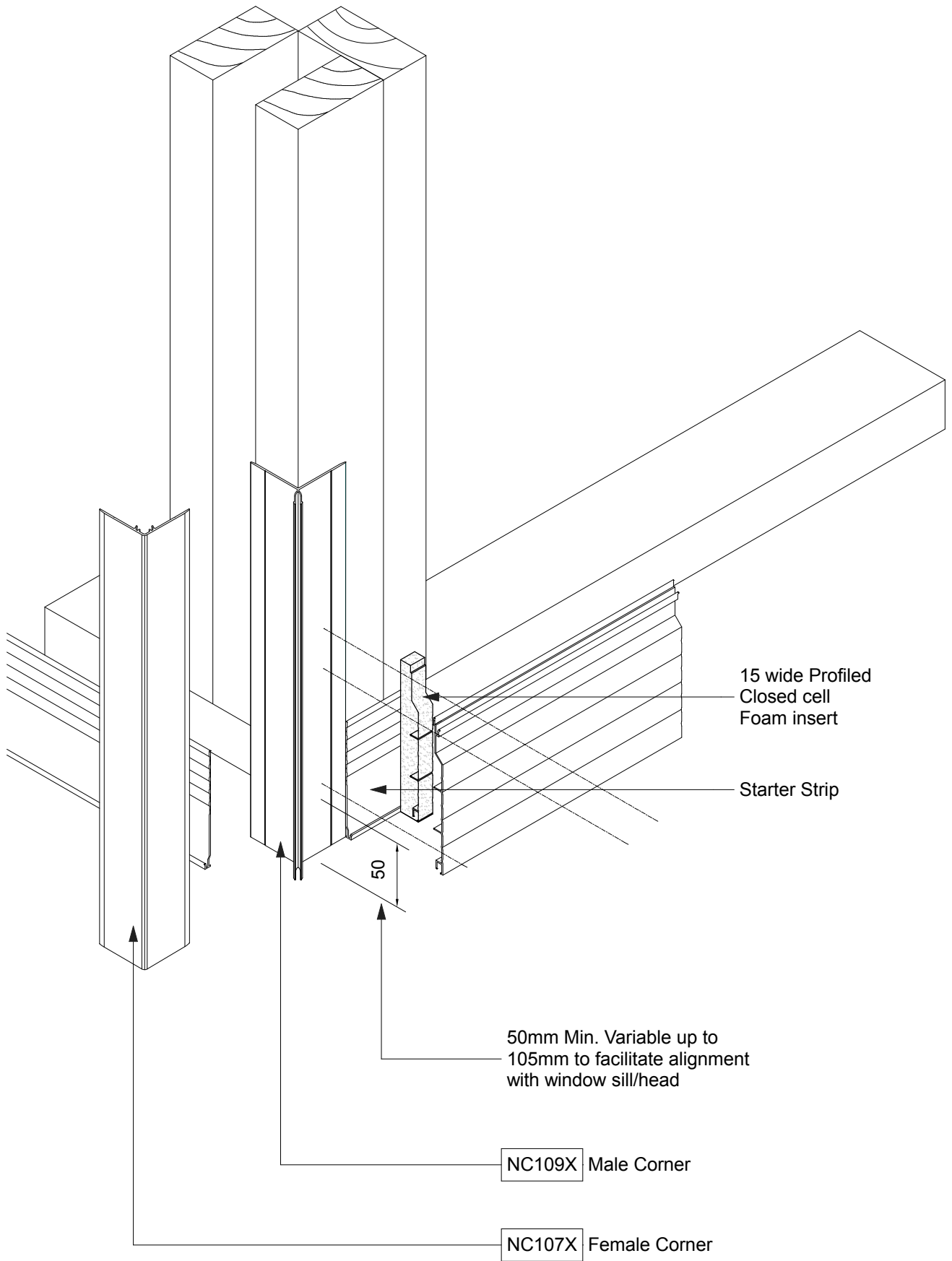
NW-H001 - Horizontal Cladding ; Direct Fix Starter Strip & Fixing
Scale 1:2



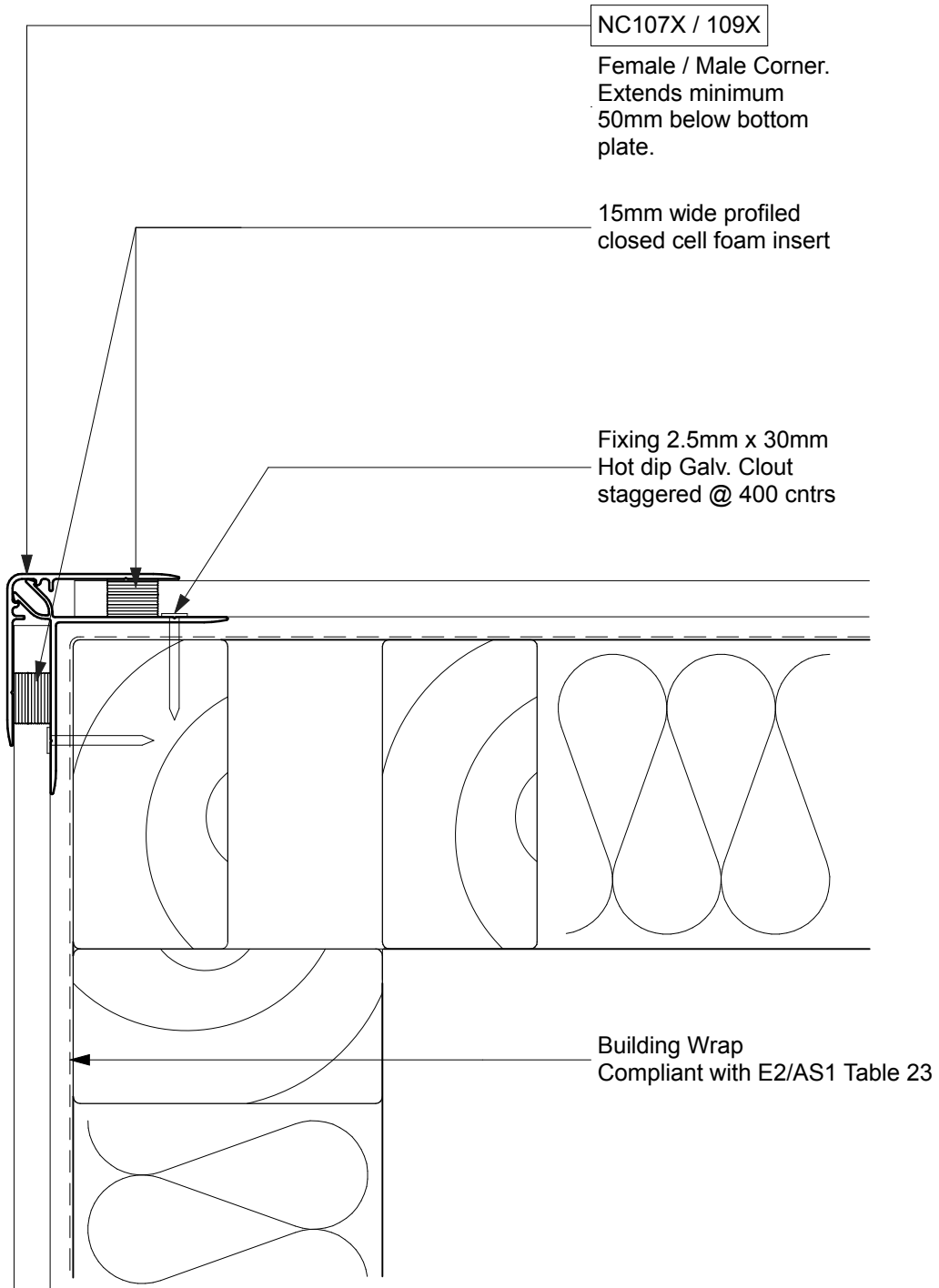
NW-H002 - Horizontal Cladding ; Direct Fix - Timber Floor
Scale 1:2



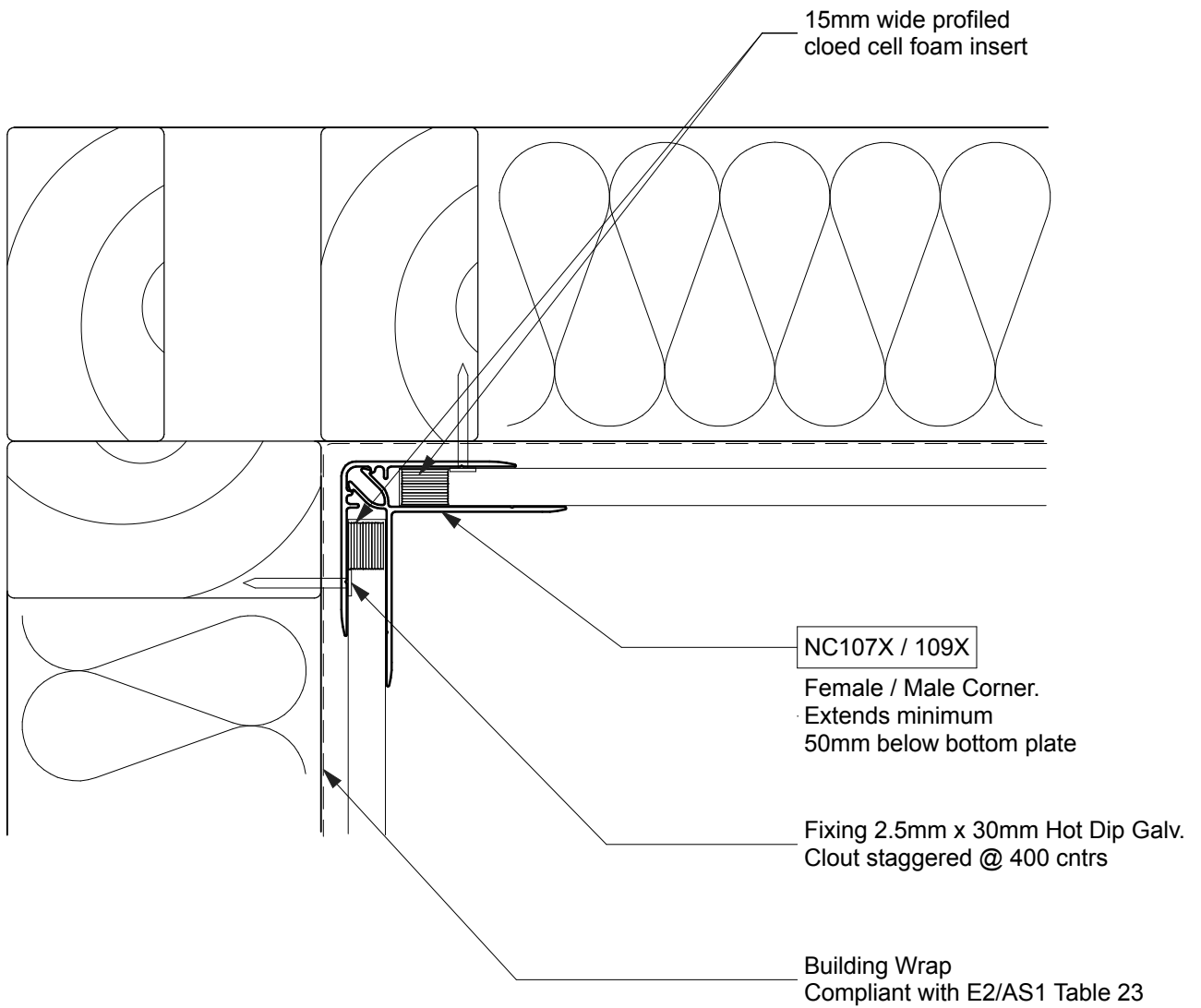
NW-H003 - Horizontal Cladding ; Direct Fix - Waterproof Deck
Scale 1:2



NW-H004 - Horizontal Cladding ; Direct Fix - Starter Strip & Corner Isometric Scale NTS



NW-H005 - Horizontal Cladding ; Direct Fix - 90° External Corner
Scale 1:2



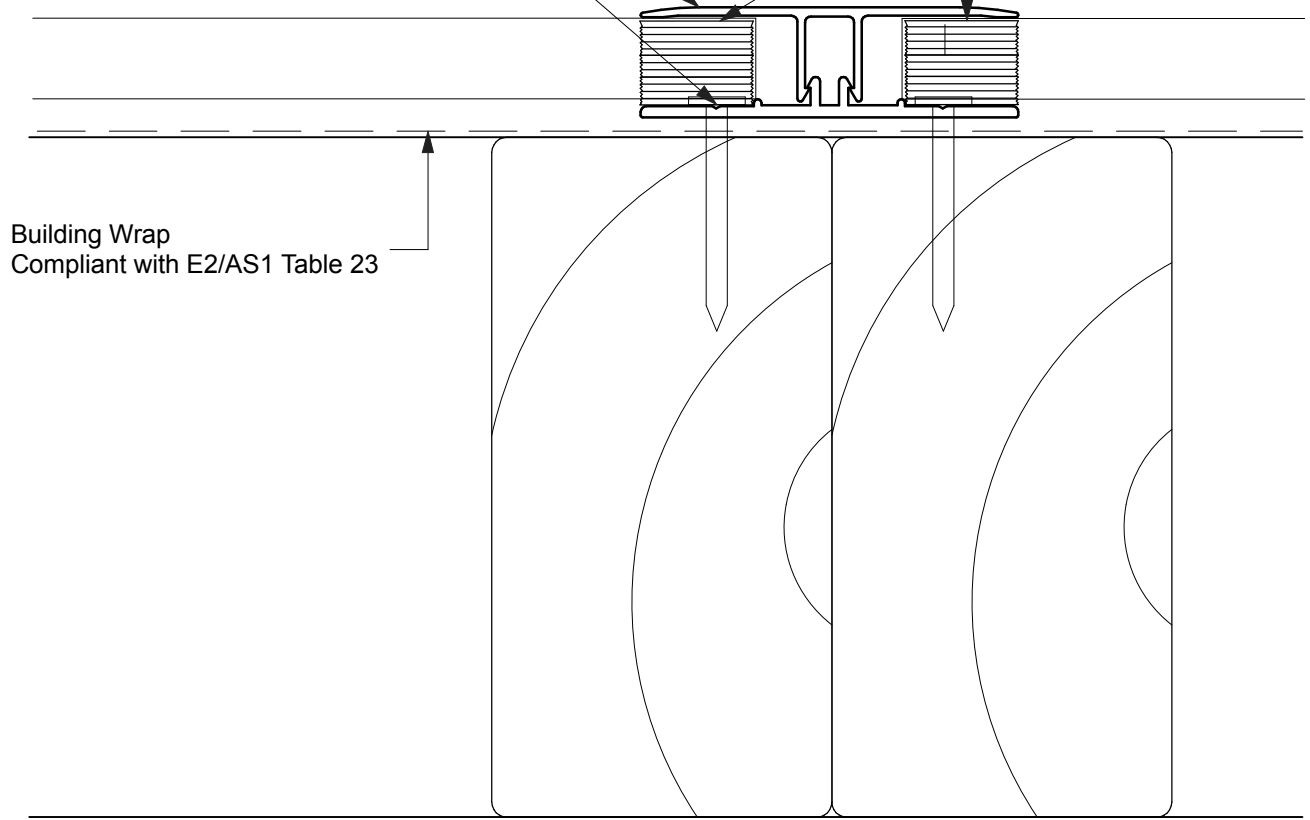
NW-H006 - Horizontal Cladding ; Direct Fix - 90° Inter Corner
Scale 1:2

NC103 / 105X

Vertical jointer extended
minimum 50mm below
bottom plate

Fixing 2.5mm x 30mm
Hot dipped Galv. Clout
Staggered @ 400mm centres

15mm wide profiled
closed cell foam insert

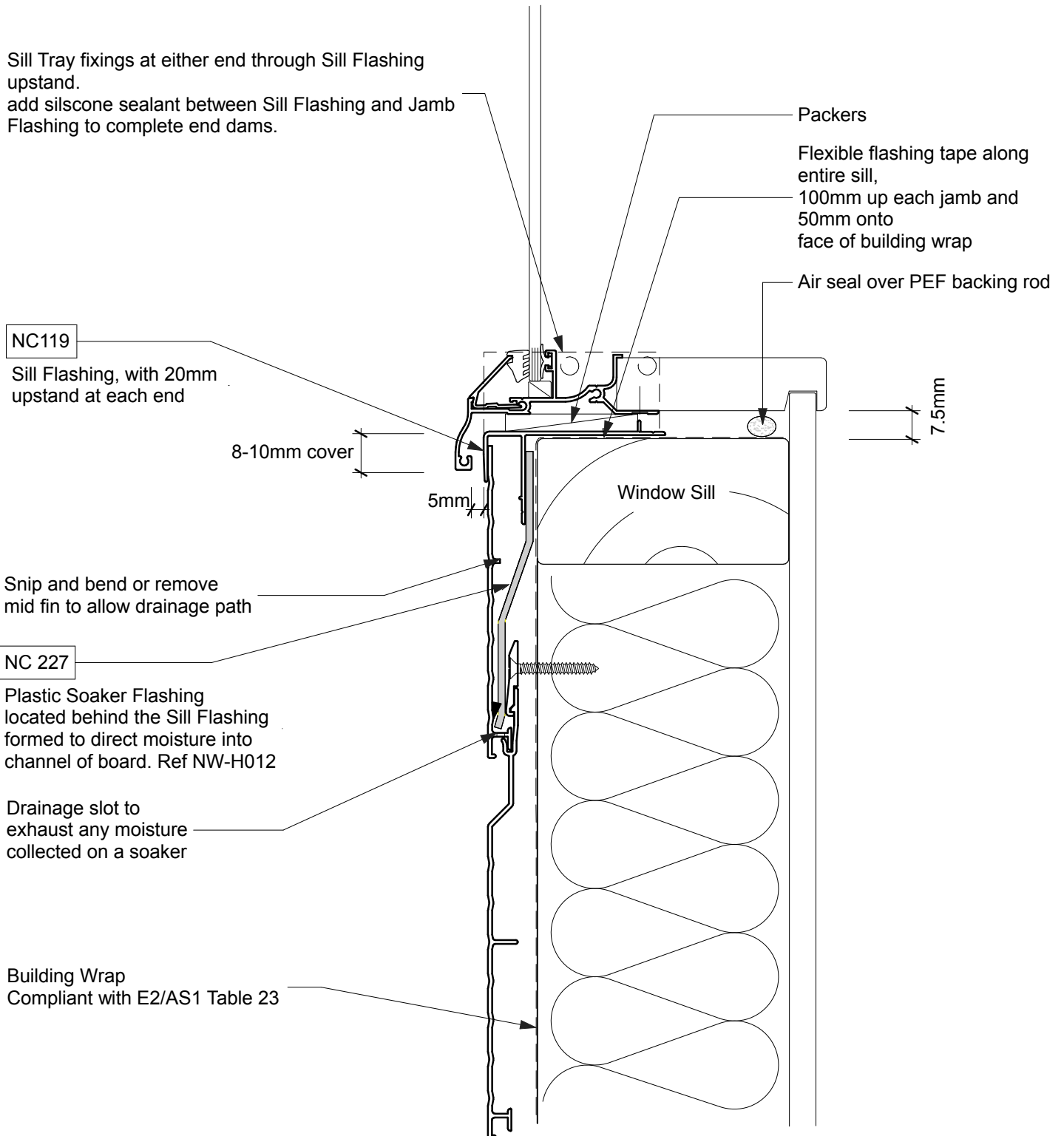


Building Wrap
Compliant with E2/AS1 Table 23

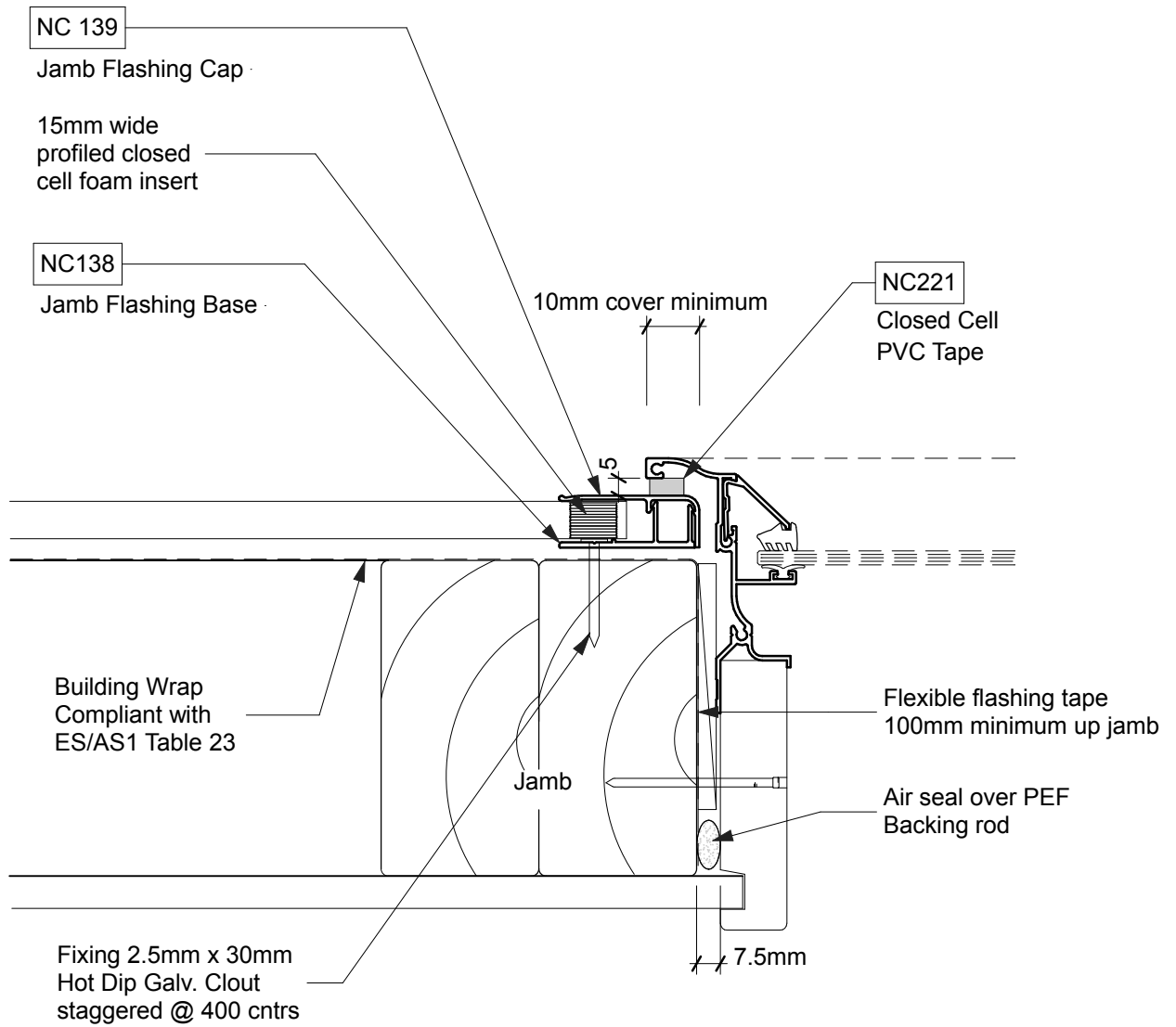
NW-H007 - Horizontal Cladding ; Direct Fix - Vertical Joint
Scale 1:1

To ensure control of failure water:

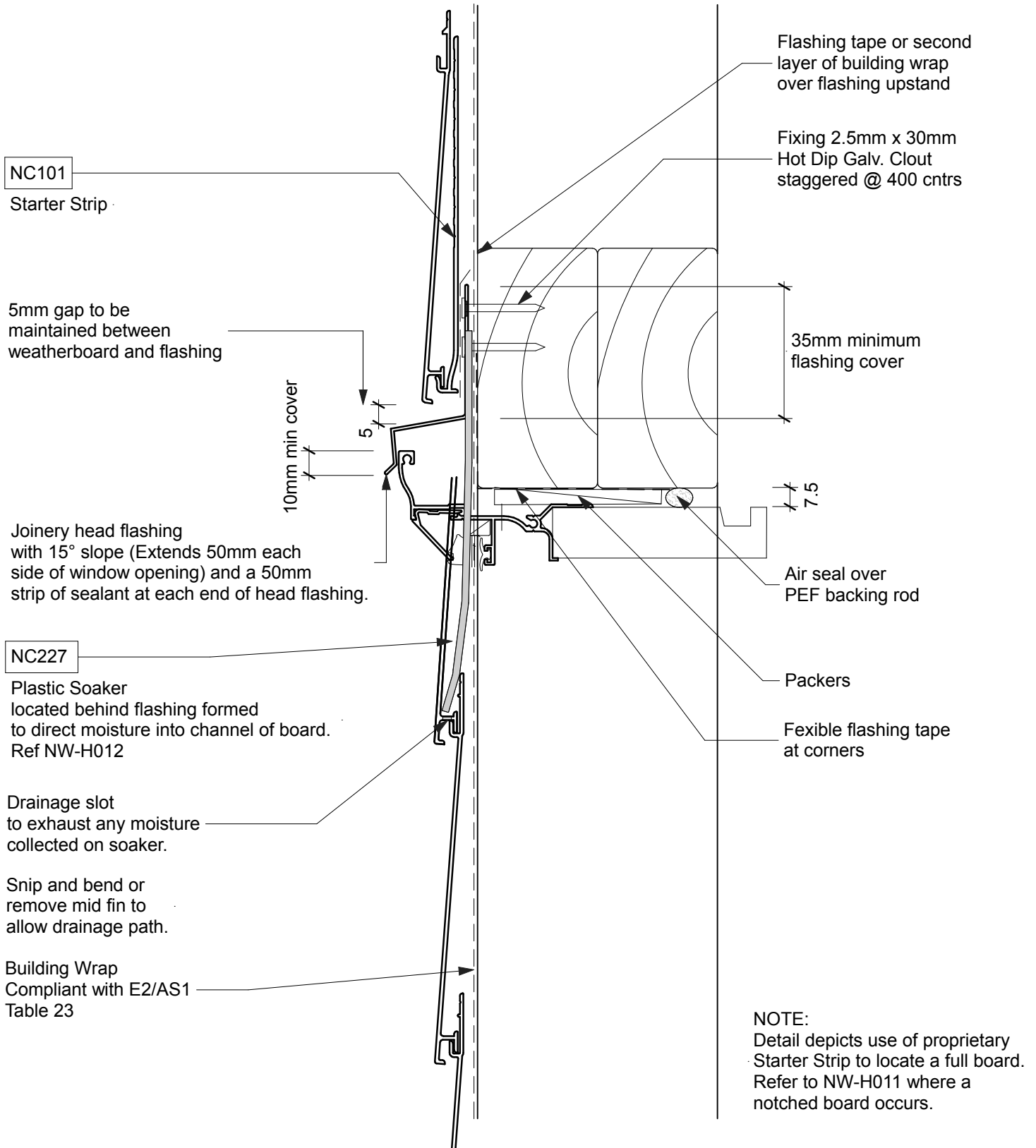
1. Stop fitting boards at last full board below window.
2. Cut and fit soaker flashing and form to locate in channel of board as shown.
3. Fit Sill Tray running over the soaker.
4. Cut board to fit around bottom of window. Cut away or drill channel to allow drainage prior to fitting board.



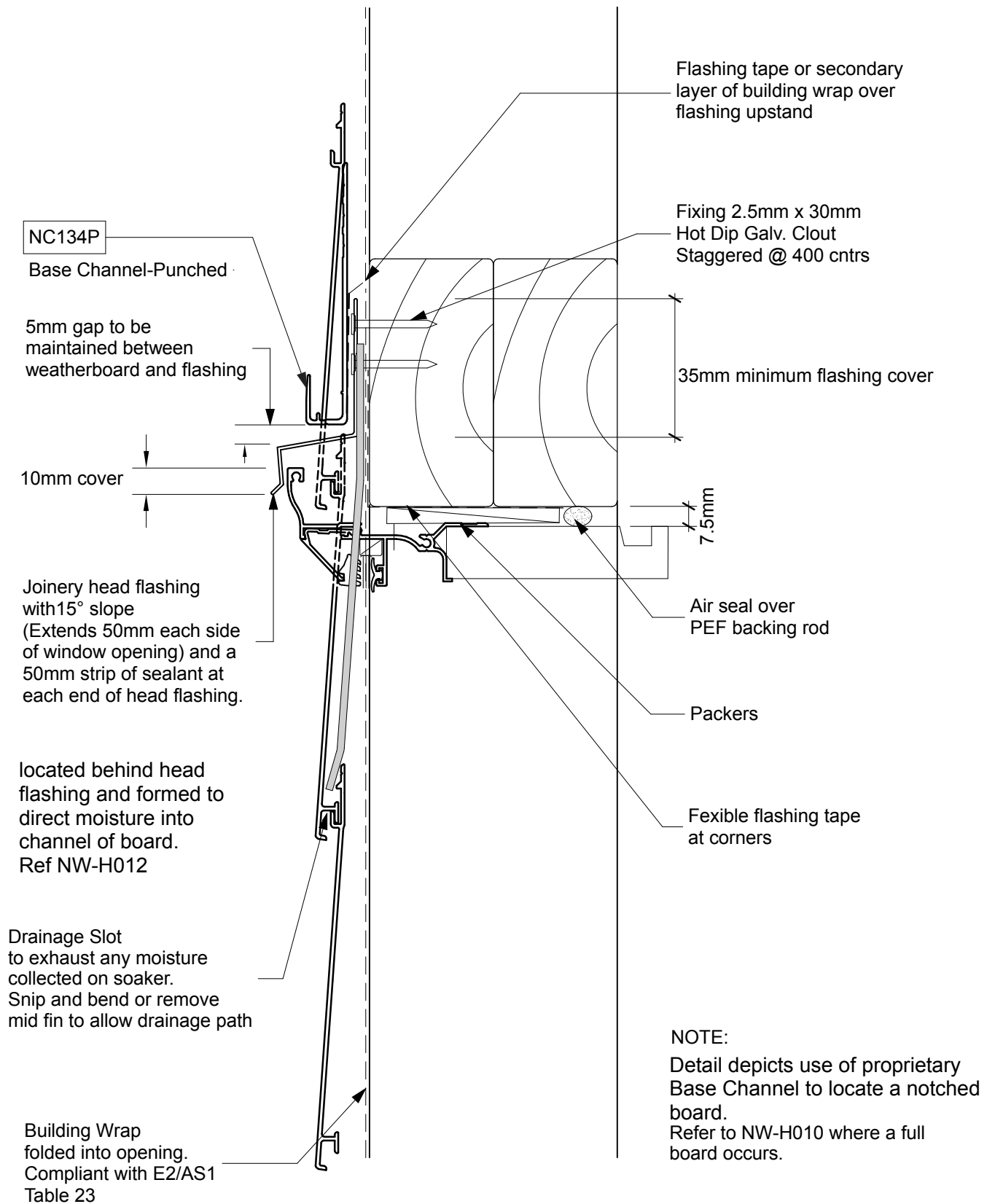
NW-H008 - Horizontal Cladding ; Direct Fix - Window Sill
Scale 1:2



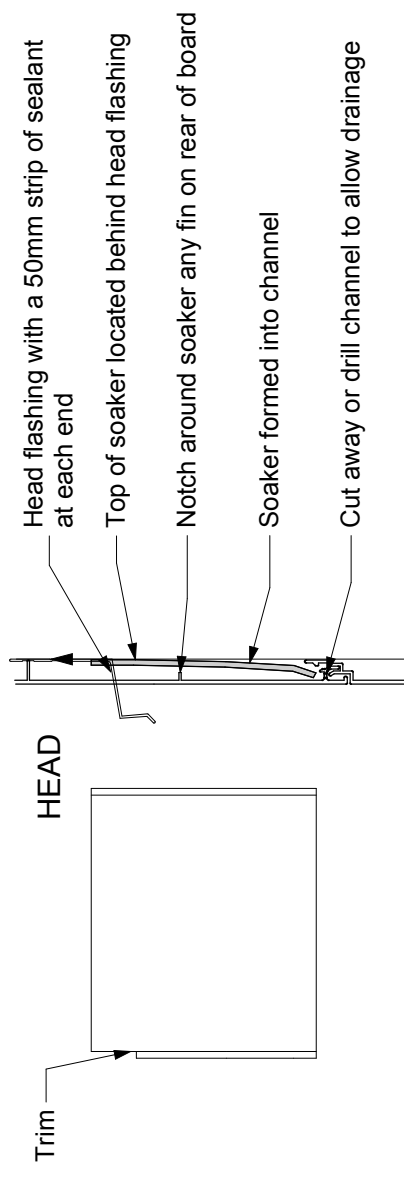
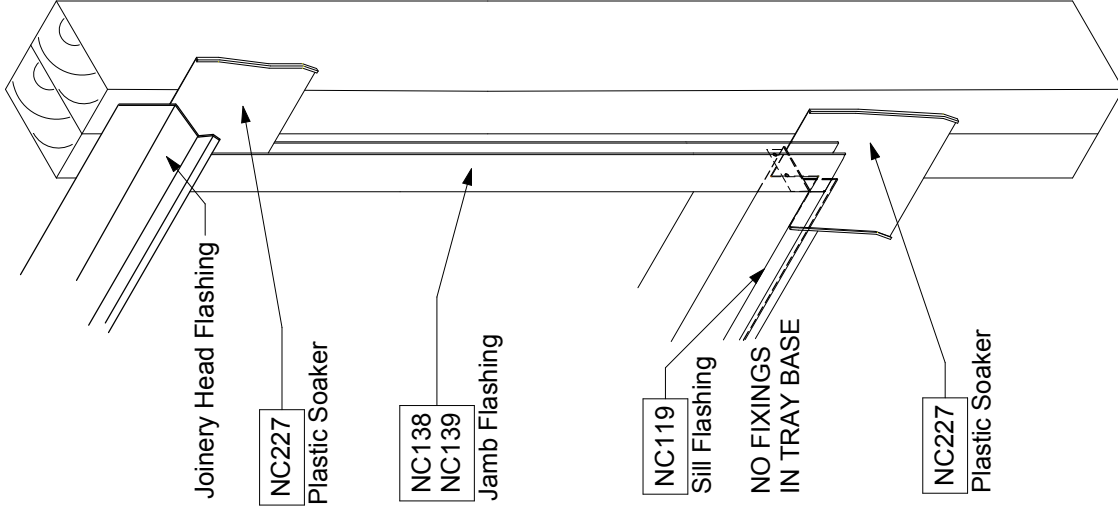
NW-H009 - Horizontal Cladding ; Direct Fix - Window Jamb
Scale 1:2



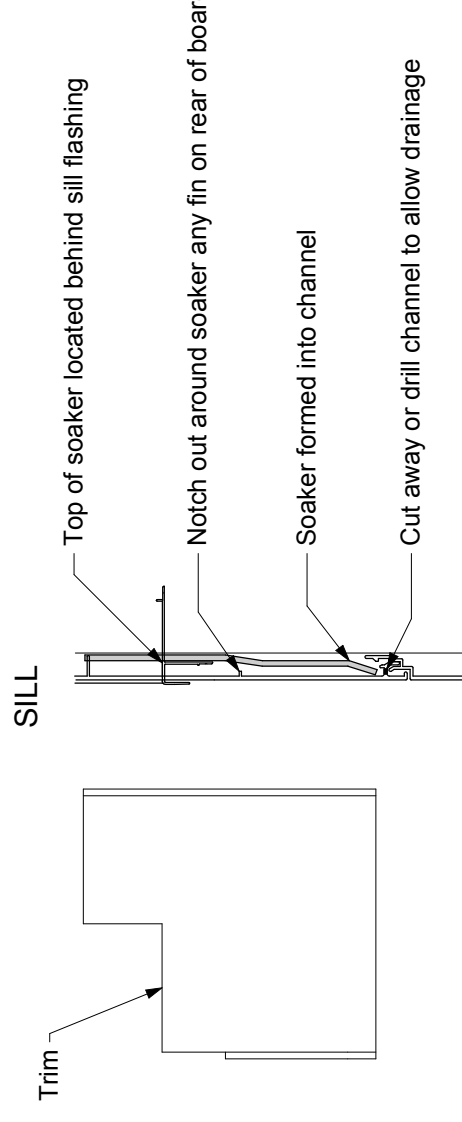
NW-H010 - Horizontal Cladding ; Direct Fix - Window Head - Full Board
Scale 1:2



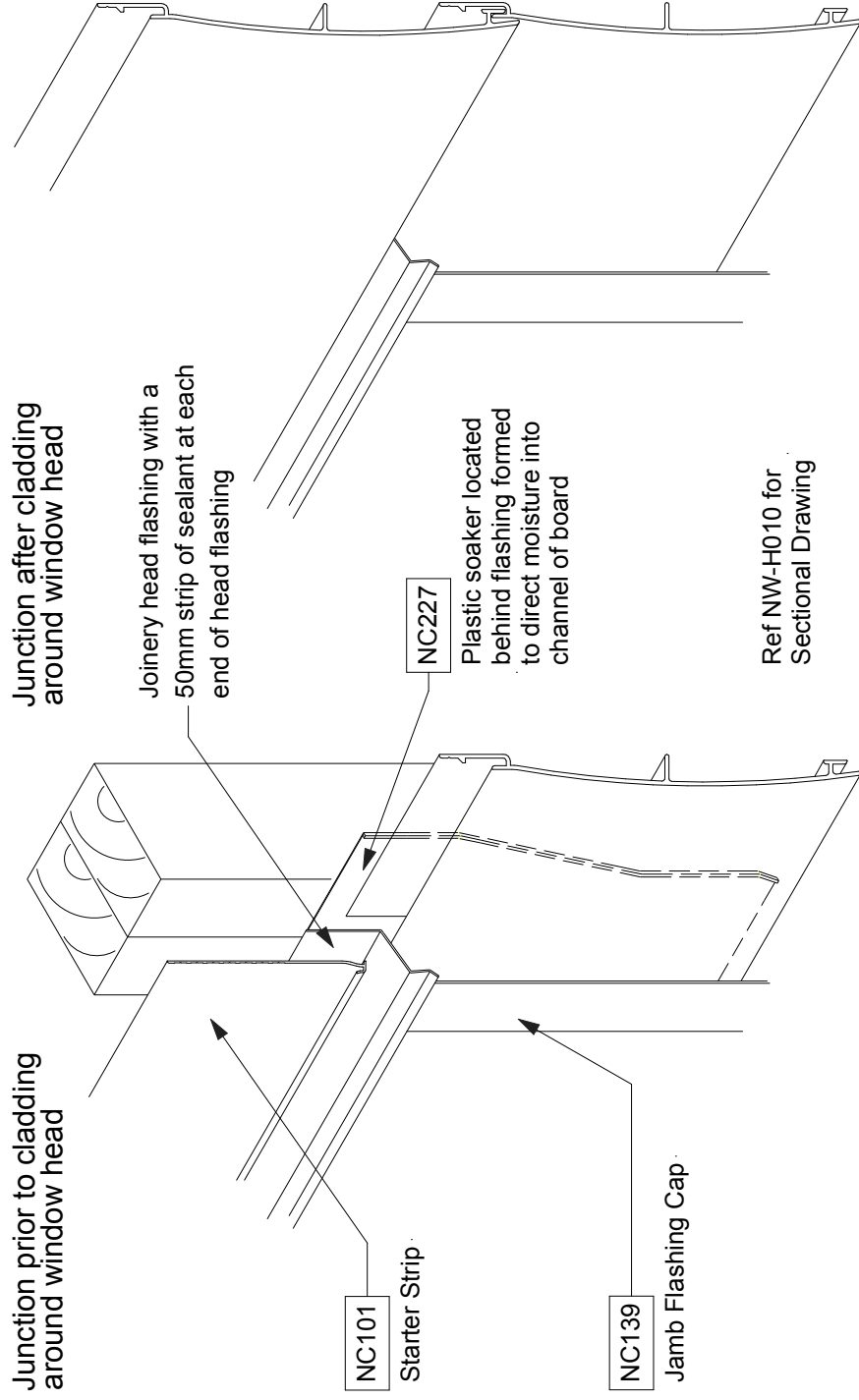
NW-H011 - Horizontal Cladding ; Direct Fix - Window Head - Notched Board
Scale 1:2



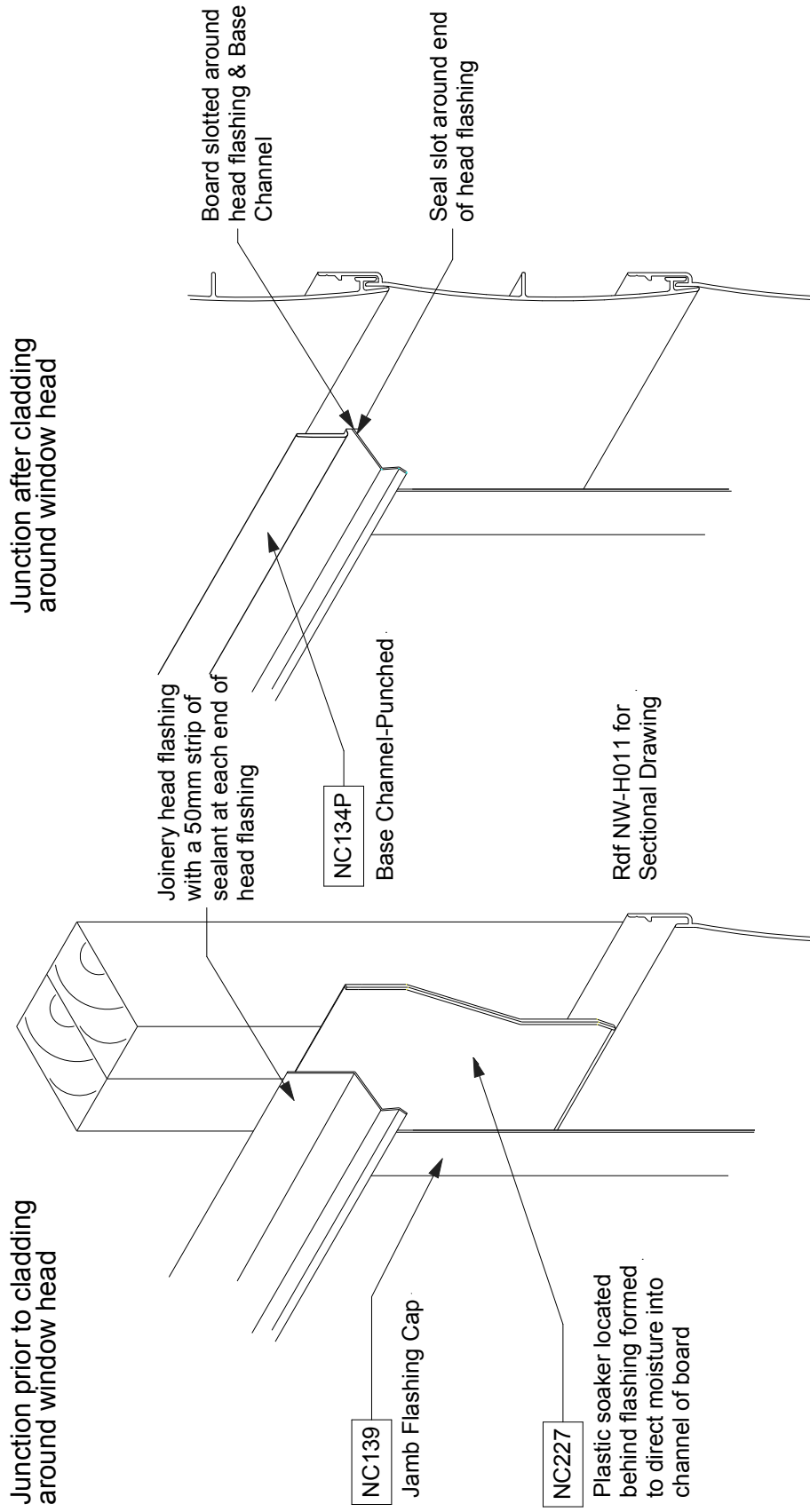
1. Cut plastic soaker initially to approximate length-allow sufficient to fit top corner behind head flashing or jamb flashing base, and to lap over fixing tongue of cladding board at bottom.
2. Trim as shown then fit into place.
3. Cut to finished length required to provide drainage path into channel. Do not cut too long-soaker should "hang" in channel.



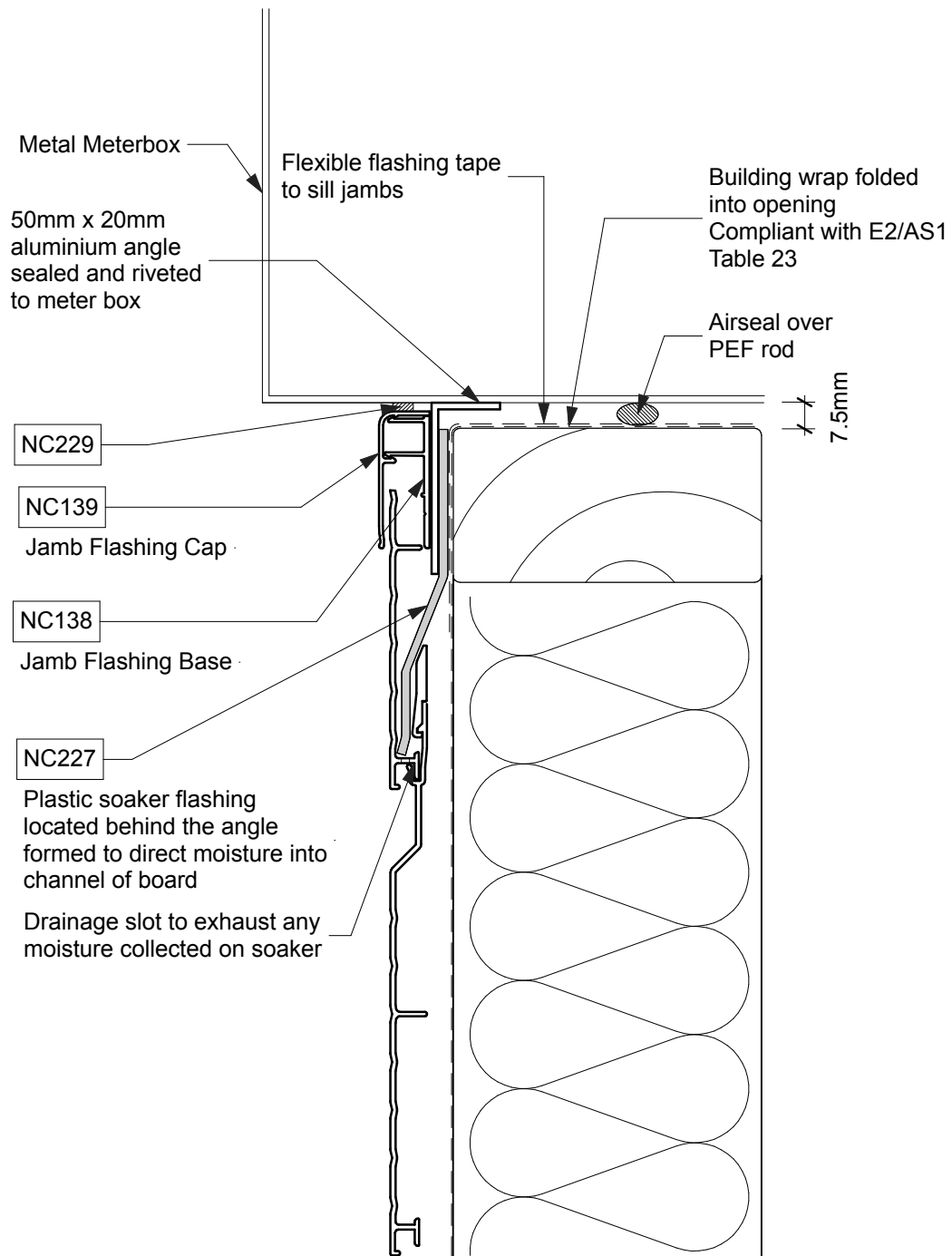
NW-H012 - Horizontal Cladding ; Direct Fix - Window Head & Sill Soaker Detail
Scale NTS



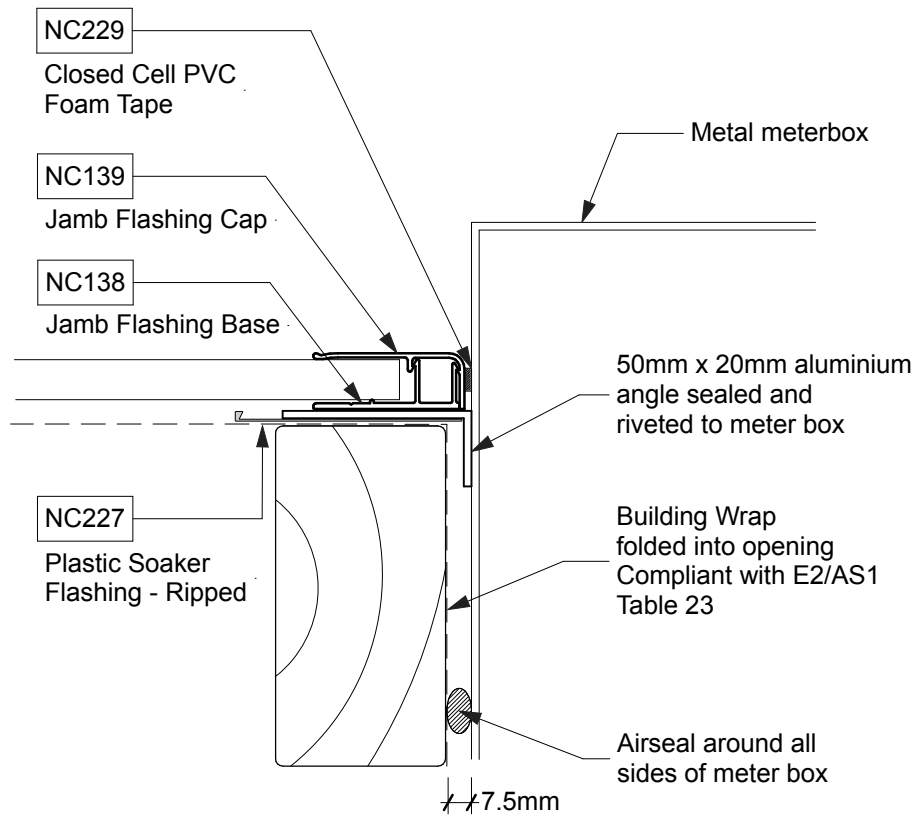
NW-H013 - Horizontal Cladding ; Direct Fix - Head Flashing End Detail - Full Board
 Scale NTS



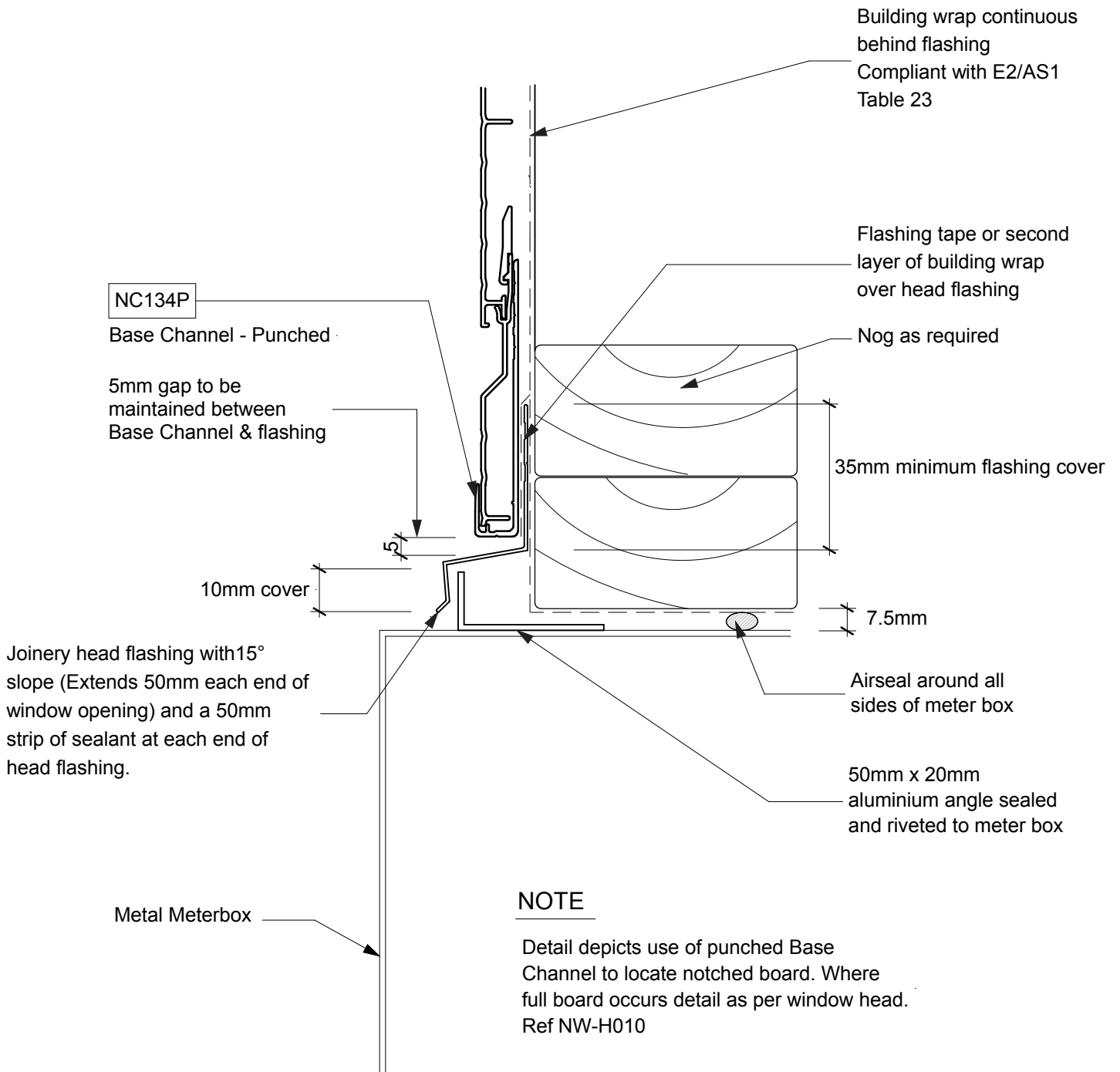
NW-H014 - Horizontal Cladding ; Direct Fix - Head Flashing End Detail - Notched Board
Scale NTS



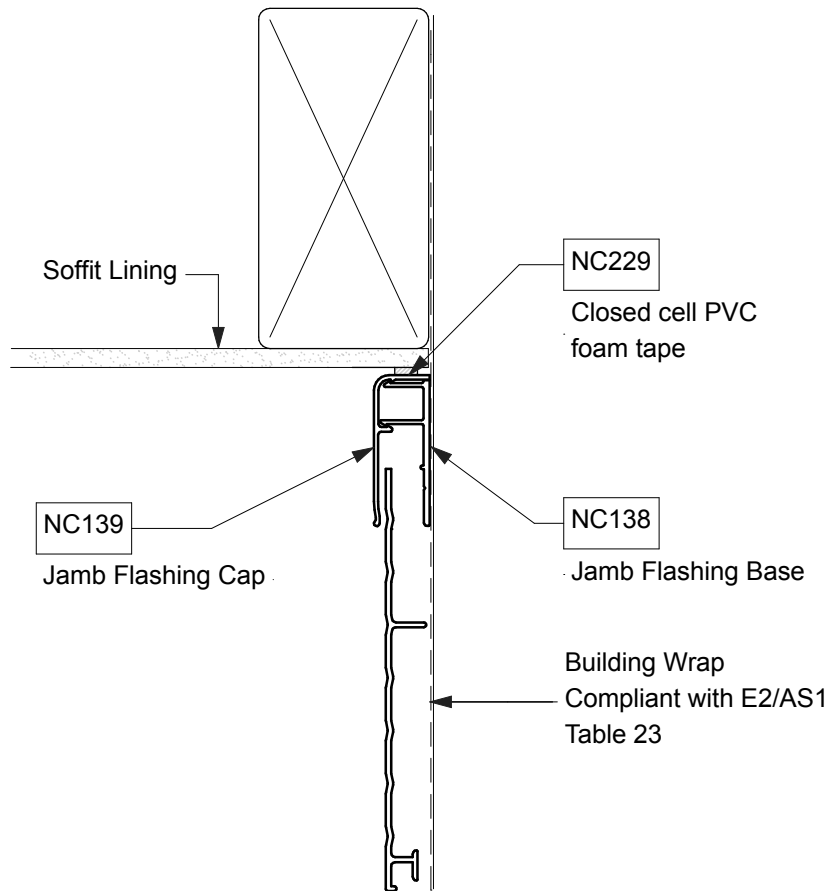
NW-H015 - Horizontal Cladding ; Direct Fix - Meter Box Sill Detail
Scale 1:2



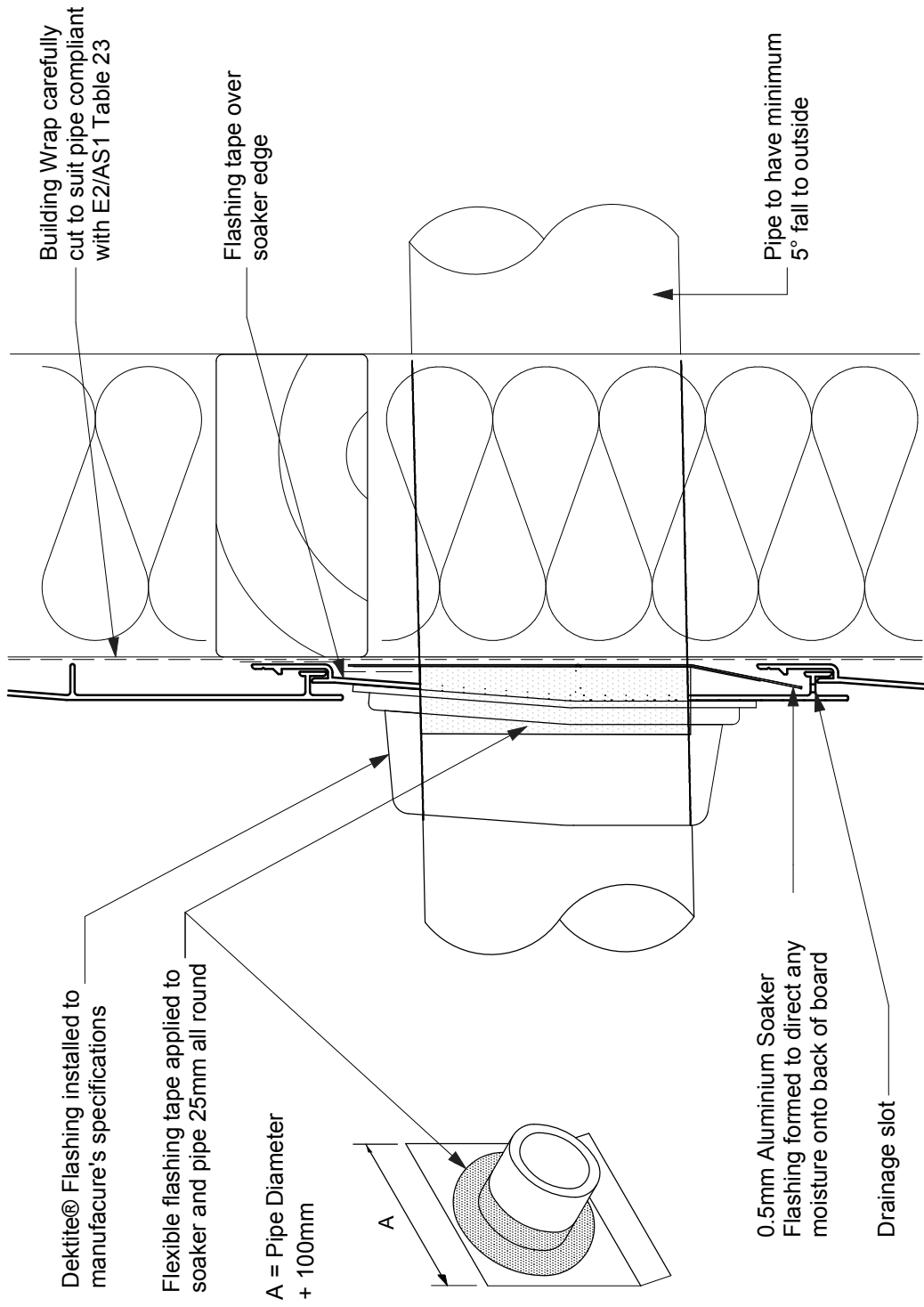
NW-H016 - Horizontal Cladding ; Direct Fix - Meter Box Jamb Detail
Scale 1:2



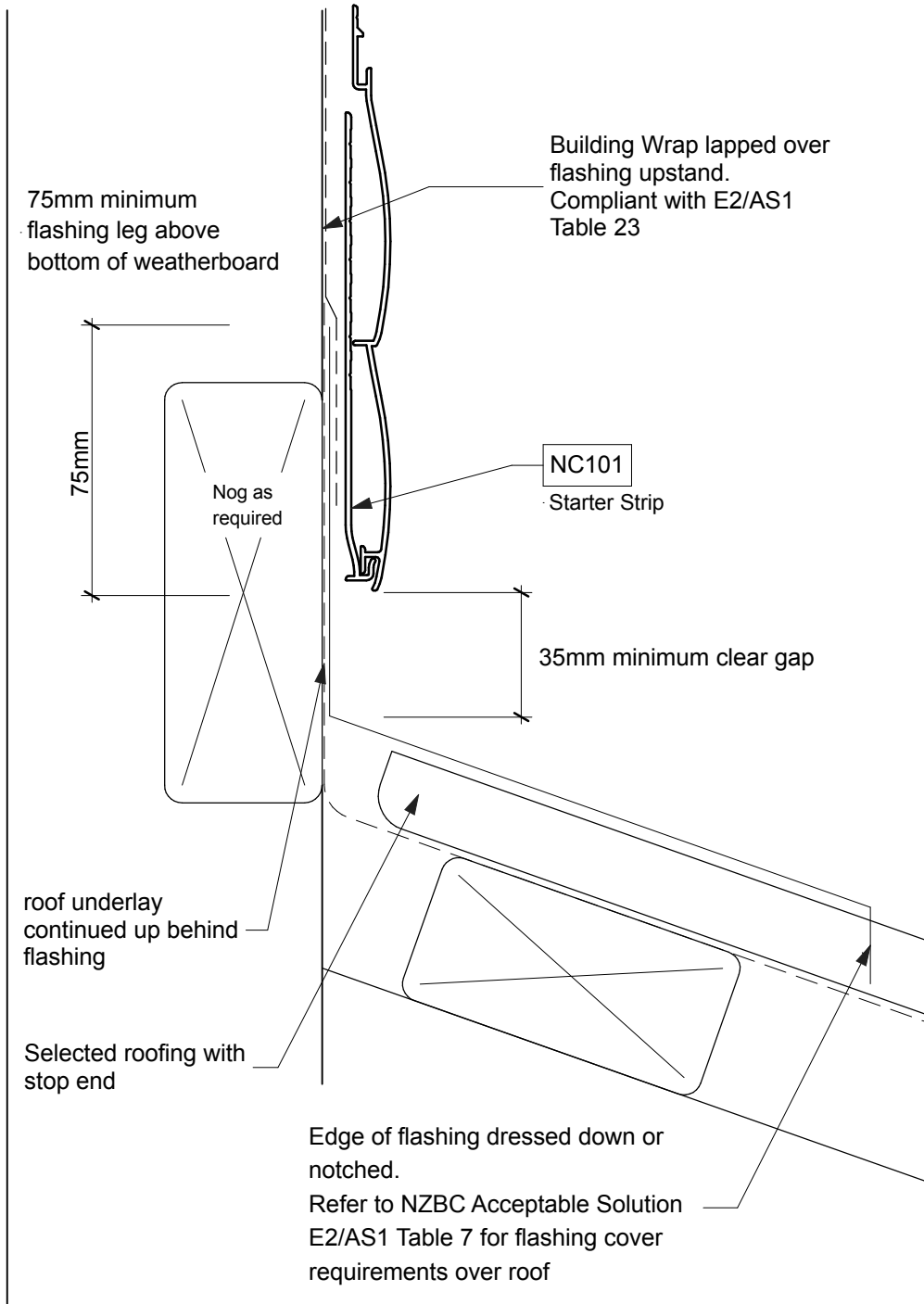
NW-H017 - Horizontal Cladding ; Direct Fix - Meter Box Head Detail
Scale 1:2



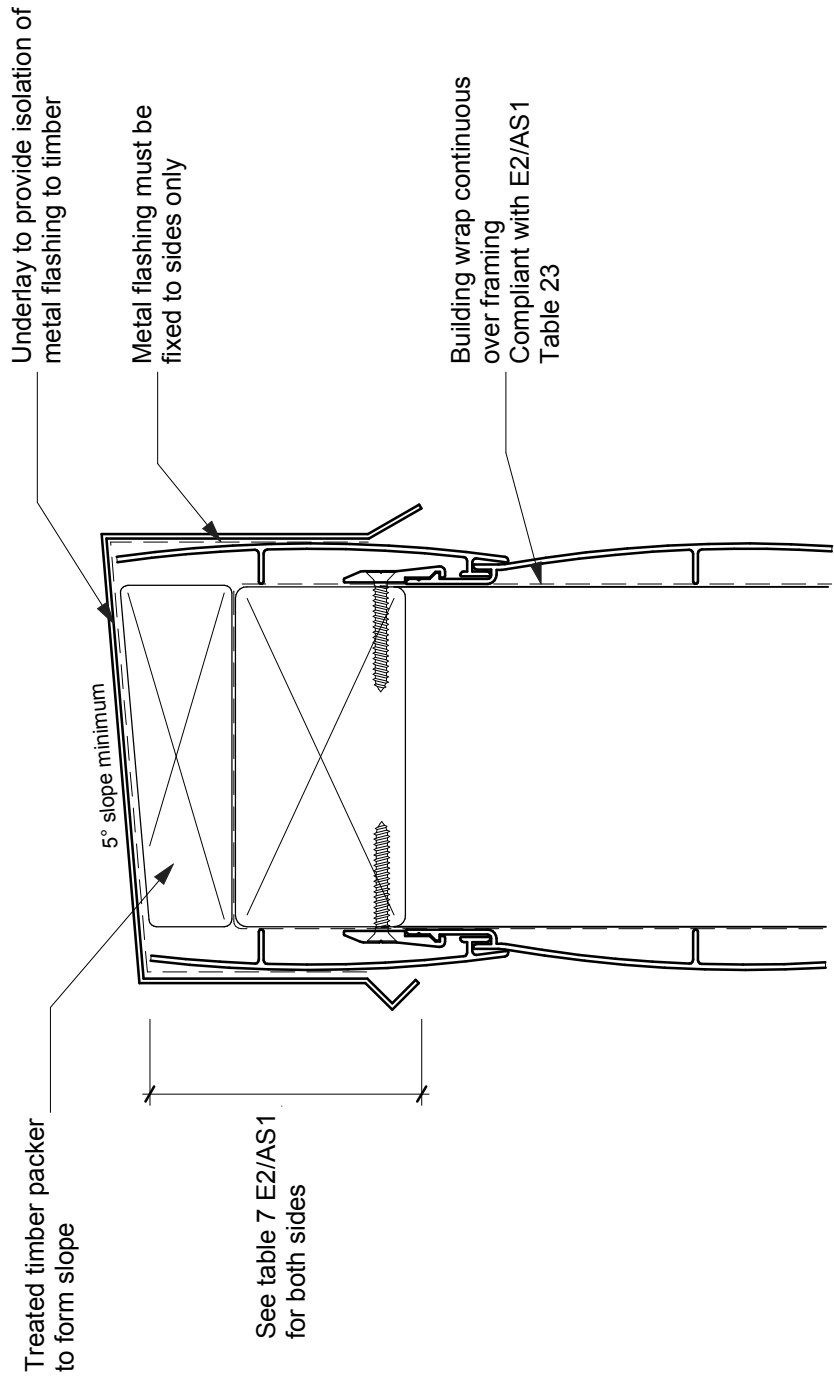
NW-H018 - Horizontal Cladding ; Direct Fix - Soffit Trim
Scale 1:2



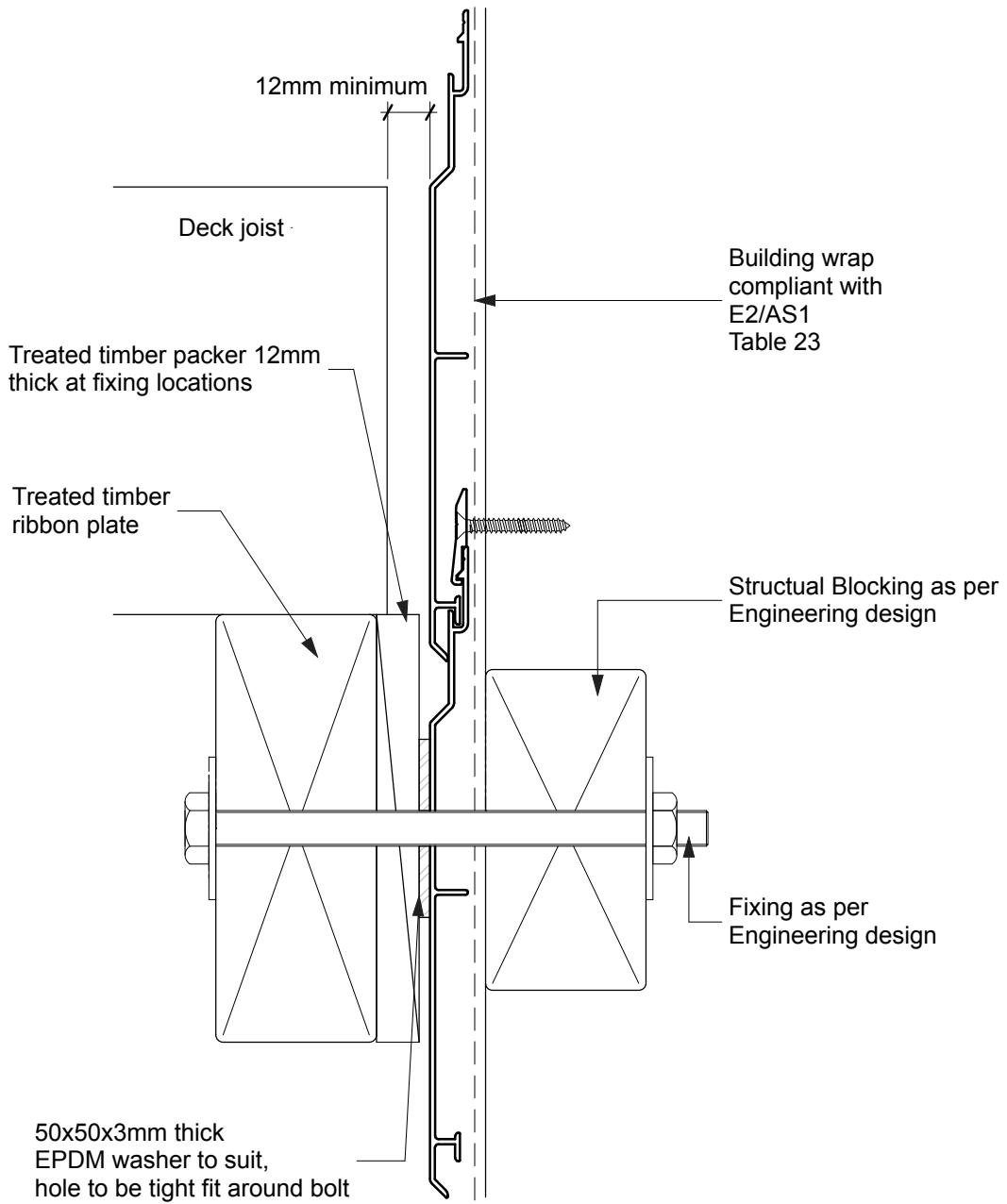
NW-H019 - Horizontal Cladding ; Direct Fix - Pipe Penetration
Scale 1:2



NW-H020 - Horizontal Cladding ; Direct Fix - Roof / Wall Junction
Scale 1:2

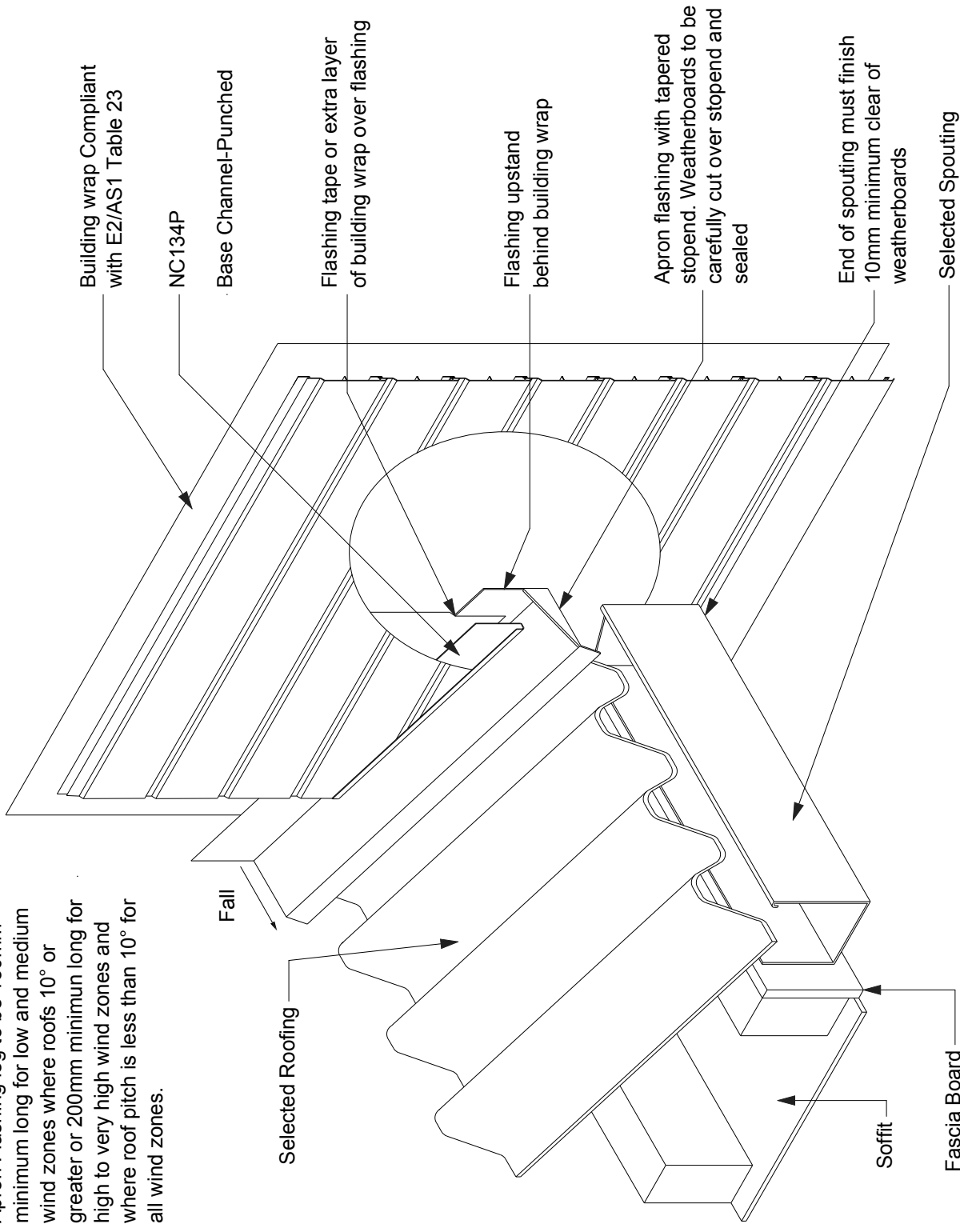


NW-H021 - Horizontal Cladding ; Direct Fix - Parapet Flashing
 Scale 1:2



NW-H022 - Horizontal Cladding ; Direct Fix - Deck Junction
Scale 1:2

Apron Flashing leg to be 130mm minimum long for low and medium wind zones where roofs 10° or greater or 200mm minimum long for high to very high wind zones and where roof pitch is less than 10° for all wind zones.



NW-H023 - Horizontal Cladding ; Direct Fix - Gutter / Wall Junction
Scale NTS