

# nu-wall<sup>®</sup>

ALUMINIUM CLADDING

AUSTRALIA

Why is Nu-Wall<sup>®</sup> the best cladding solution on the market?



[nuwallaustralia.com.au](http://nuwallaustralia.com.au)

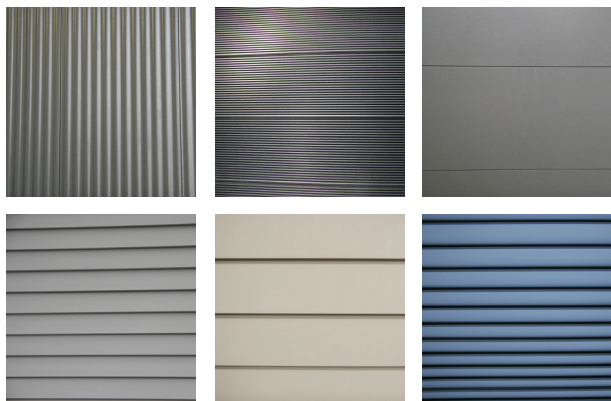
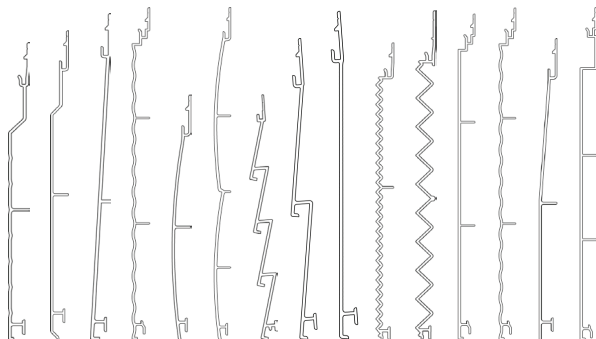
**Nu-Wall® is an extruded aluminium system designed and manufactured in New Zealand. It offers over a dozen profile variants, giving specifiers a wide range of choices – from traditional weatherboard appearance to ultra-modern options.**

The real key to the success of Nu-Wall® is that as a pre-finished aluminium product, maintenance is minimal and the lifespan of the material is over 100 years. It's also non-combustible, easy to install and offers architects, and the clients who hire them, a lot more creative freedom than traditional solutions.

It also negates the need for specialised contractors. From a construction perspective, no other trades (e.g. painters) are required. That means at the completion of a Nu-Wall® installation, expensive access can immediately be de-hired as the elevation is completed.

- **Non-combustible as per AS1530.1**
- 30 yrs experience in quality cladding solutions
- Huge range of profiles, colours and textures
- Fast lead times with local stock
- Easy to install and cost-effective
- Low-maintenance
- Solid aluminium

## 15 Profiles. Unlimited Finishes.



## Creativity Without the Usual Limits

**Special Treatments** | We offer a variety of timber finishes on the entire Nu Wall® range. Also, a polished stone look can be applied to the Mono 200 profile, enabling a high-price look at a fraction of the cost.

How about standing seam zinc? By combining the Mono 200 profile and the new standing seam ancillary, your design can achieve a truly unique style without compromising the budget.

**Finishes** | Choose from the extensive Interpon® or Dulux® powder coat colours, or standard Colorbond® colours; even pearlescent and textured options. Some Nu Wall® profiles can also be anodised in matte clear or a variety of anodised colours for a beautiful metallic look. Speak to us about your idea. Chances are, it can be done.

**Energy Efficiency** | The Nu-Wall® system is extruded by an ISO 9001 certified manufacturer and utilises up to 80% reclaimed material in the extrusion process. Recycled aluminium uses only 5% of the energy required to produce aluminium from scratch. This makes Nu-Wall® very environmentally friendly.

**Warranty** | The Nu-Wall® range comes with warranties of up to 25 years, depending on the surface finish.



03 9466 3660 | 36 Temple Dve, Thomastown, Vic  
[www.nuwallaustralia.com.au](http://www.nuwallaustralia.com.au)



#550 Horizontal installation over a drained & vented cavity  
#556 Vertical installation; direct-fixed to framing  
#557 Horizontal installation; direct-fixed to framing